

## Grand Landscapes of Namibia



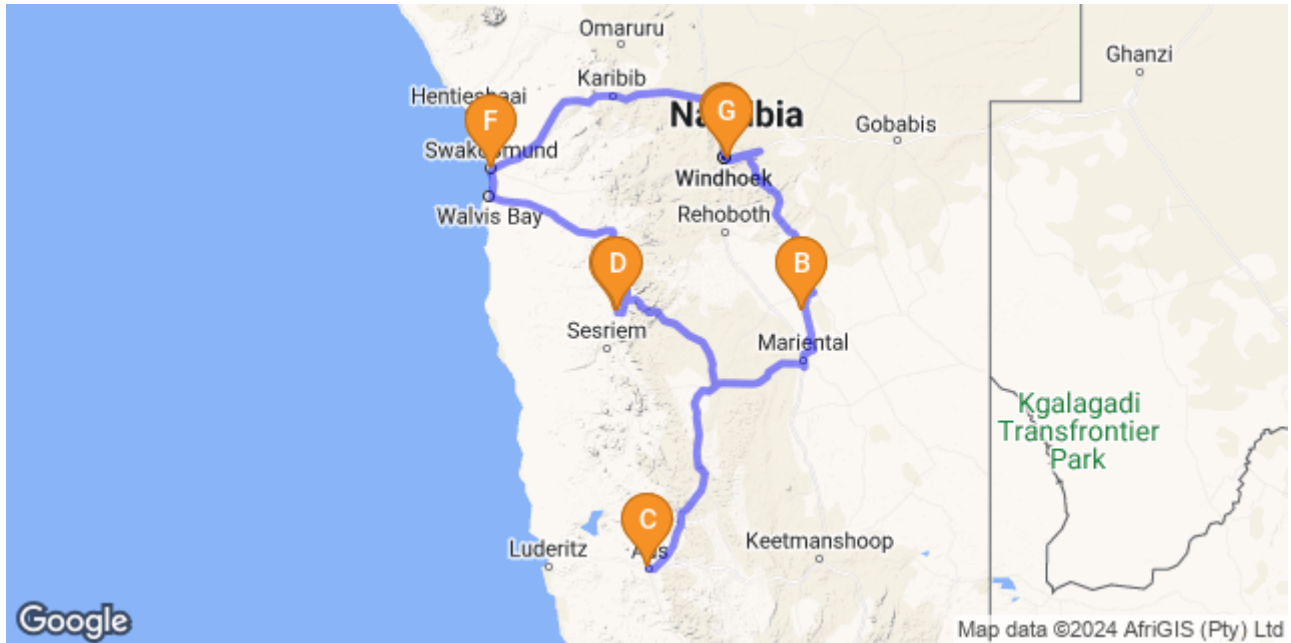


## Grand Landscapes of Namibia

Windhoek - Mariental - Aus - Sossusvlei - Swakopmund

10 Days / 9 Nights

Date of Issue: 06 May 2024



[Click here to view your Digital Itinerary](#)

## Introduction

---

Accommodation	Destination	Duration
<a href="#">Olive Grove Guesthouse</a>	Windhoek	<b>1 Night</b>
Zebra Kalahari Lodge & Spa	Mariental	<b>1 Night</b>
<a href="#">Klein-Aus Vista Desert Horse Inn Gondwana Collection Namibia</a>	Aus	<b>2 Nights</b>
<a href="#">Namib Desert Lodge Gondwana Collection Namibia</a>	Sossusvlei	<b>1 Night</b>
<a href="#">Namib Dune Star Camp Gondwana Collection Namibia</a>	Sossusvlei	<b>1 Night</b>
<a href="#">The Delight Swakopmund Gondwana Collection Namibia</a>	Swakopmund	<b>2 Nights</b>
<a href="#">Am Weinberg Estate's Boutique Hotel</a>	Windhoek	<b>1 Night</b>

---

## Included

9 x Breakfast

1 x Dinner

## Day 1: Olive Grove Guesthouse, Windhoek

---

### Windhoek

Windhoek is Namibia's capital, home to an international airport and a plethora of restaurants, shops, entertainment venues and accommodation options. The city is clean, safe, and well-organised, with a colonial legacy that is reflected in its many German eateries and shops, and the widespread use of the German language. Windhoek has an interesting mix of historical architecture and modern buildings, many of which are worth a look, including the Alte Feste (Old Fort), the 1896 Christuskirche (Christ Church), and the more contemporary Supreme Court.

---

### Overnight: Olive Grove Guesthouse [View iBrochure](#)

Olive Grove is a small upmarket accommodation establishment situated close to the city centre in a quiet, peaceful area. The guesthouse takes homely atmosphere to a different level.

The newly renovated, open-plan kitchen allows guests to see how meals are prepared, while they enjoy a drink in the lounge. The menu was also reinvented and is now fully a la carte, quite unique for a guesthouse. Home-style food is rounded off with great presentation, pushing up the level of the guesthouse dining experience.

Whilst each of the ten rooms and one suite cater for every need of the most discerning traveller, the emphasis remains one of simplicity and elegance.



## Day 2: Zebra Kalahari Lodge & Spa, Kalahari

---

### Kalahari

The Kalahari is an exceptionally beautiful living desert a large semi-arid sandy savannah draped over a gently rolling inland sea of sand covering most of Botswana and large parts of Namibia and South Africa. It is also the last bastion of the San people with the modern world having enveloped all the other areas they once roamed. Here in Namibia it is typically red sands covered in thin, wispy, mostly golden grass and dotted with acacia trees and wide-ranging wildlife including gemsbok, impala, jackals and cheetah.

---

### Overnight: Zebra Kalahari Lodge & Spa

Simply stylish and elegant, the Zebra Kalahari Lodge is the most decadent of the 3 lodges on the Intu Afrika Private Game Reserve. After a short drive through the contrasting Kalahari Desert where game languish



under trees or in pans, guests are welcomed with a much-needed refreshing drink and a smile as warm as the desert sun. The gurgling fish pond and the beautiful stone and wood buildings immediately soothe one's soul and guests are ushered into the coolness of the lounge area overlooking a rather vibrant waterhole and swimming pool whilst logistics are efficiently handled.

The rooms area are huge and the walls are decorated with ancient African masks and ebony furnishings and are fitted with air conditioners, a mini bar, a hairdryer and a coffee and tea station with a very large bathroom leading out to an outside shower.

There are 8 rooms adjacent to the lodge area which consists of a lounge with comfortable leather seats, a dining area on a deck mirroring the waterhole and swimming pool and a bar. This lodge is ideal for families or for more mature travellers as the facilities at the main lodge are easily accessible from their rooms.




---

## Day 3 - 4: Klein-Aus Vista Desert Horse Inn Gondwana Collection Namibia, Aus

---

### Aus

This region is typified by the Succulent Karoo. The distinctive climatic characteristics of the Succulent Karoo make it different from all other deserts in the world. Rainfall is reliable and predictable, falling mostly in winter, and prolonged droughts are rare. The Succulent Karoo's botanical diversity is unparalleled by any other arid region on earth and is the world's only plant hotspot that is entirely arid. This ecoregion is home to greater than 5,000 higher plant species, nearly 40 percent of which are endemic, and 18 percent of which are threatened. It has the richest succulent flora in the world, harbouring about one-third of the world's approximately 10,000 succulent species. Other unique features include the diversity of miniature succulents (435 spp.) and geophytes (bulb-like plants 630 spp.). The ecoregion is also a center of diversity and endemism for reptiles and many invertebrate taxa, especially monkey beetles (Rutelinae: Hoplinii). The Namib Desert ecoregion to the north is characterized by extremely low and variable summer rain (less than 50 mm per year), and extremely sparse plant cover, dominated by ephemerals. To the east lies the Nama Karoo ecoregion, a low open shrubland with variable grass cover and highly variable rain that falls mainly in the late summer months.

---

**Overnight: Klein-Aus Vista Desert Horse Inn Gondwana Collection Namibia**[View iBrochure](#)

Located in the Aus Mountains at 1,400 metres above sea level, Desert Horse Inn affords grand vistas of mountain scenery and sweeping desert plains. It consists of 24 spacious and tastefully decorated en suite rooms. Relax with sundowners on the wooden deck before enjoying a 3-course meal in the restaurant. Exchange travel experiences and recommendations at the evocative Wild Horse Bar or at the cosy fireplace in the lounge.

**Day 5: Namib Desert Lodge Gondwana Collection Namibia, Sossusvlei****Sossusvlei**

Sossusvlei is where you will find the iconic red sand dunes of the Namib. The clear blue skies contrast with the giant red sand dunes to make this one of the natural wonders of Africa and a photographer's heaven. Aside from the attractions at Sossusvlei - Dune 45, Hiddenvlei, Big Daddy and Deadvlei - other attractions in the area include the Sesriem Canyon and Namib-Naukluft National Park, where the mountains of the Namib meet its plains.

**Overnight: Namib Desert Lodge Gondwana Collection Namibia**[View iBrochure](#)

Namib Desert Lodge is located 60 km north of Sesriem on the C 19 (Sossusvlei Area).

Set below striking fossilised dunes, the comfortable lodge provides a spectacular experience of ancient desert. 65 rooms, two swimming pools and a waterhole are surrounded by sandy splendour. Breathe in the grandeur on a sunset drive and feel the earth underfoot. Relax in the arms of the Namib.



---

## Day 6: Namib Dune Star Camp Gondwana Collection Namibia, Sossusvlei

---

### Sossusvlei

As previously described

---

### Overnight: Namib Dune Star Camp Gondwana Collection Namibia [View iBrochure](#)

Namib Dune Star Camp is located 60 km north of Sesriem on the C 19 (Sossusvlei Area).

Escape from the world. A transfer leads you into a vast desert wilderness to 9 wooden cabins. After checking in an optional guided hike is offered to explore the area. As soon as the dunes have transformed to gold and the distant mountains glow purple, it's time to wheel beds onto balconies. Enjoy a night under the glittering sky of the Namib. (Only kids as of 12 years allowed)



---

## Day 7-8: The Delight Swakopmund Gondwana Collection Namibia, Swakopmund

---

### Swakopmund

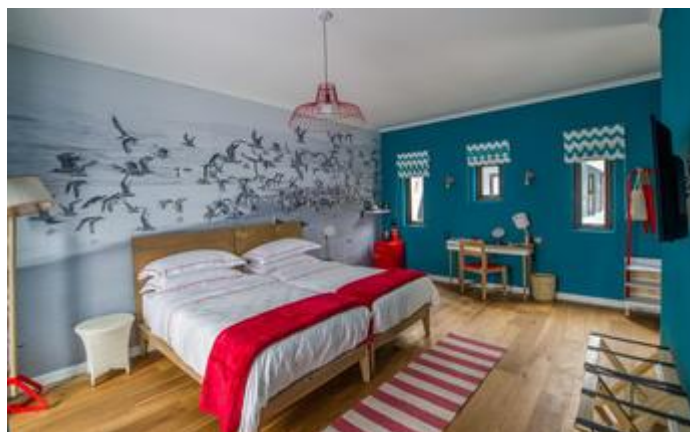
Set along the spectacular Namibian coastline, the seaside town of Swakopmund is known for its wide open avenues, colonial architecture, and is surrounded by otherworldly desert terrain. Founded in 1892 as the main harbour for German South West Africa, Swakopmund is often described as being more German than Germany. Now a seaside resort town, Swakopmund is the capital of the Skeleton Coast tourism area and has plenty to keep visitors happy. The quirky mix of German and Namibian influences, adventure options, laidback atmosphere and cool sea breeze make it very popular Namibian destination. Visitors can look forward to a number of exciting activities including: quad biking, horse riding, paragliding, fishing, sightseeing and fascinating desert tours.

---



**Overnight: The Delight Swakopmund Gondwana Collection Namibia**[View iBrochure](#)

Amongst the town's captivating contrasts and old traditions, Gondwana's Delight Swakopmund is a fresh breeze in the desert. A refreshing, relaxing, modern, light and airy establishment to uplift and inspire. Effortless and comfortable, with the distinctively warm and welcoming Gondwana service and charm, your stay is always a memorable experience.

**Day 9: Am Weinberg Estate's Boutique Hotel, Windhoek****Windhoek**

As previously described

**Overnight: Am Weinberg Estate's Boutique Hotel**[View iBrochure](#)

The Am Weinberg Estate's Boutique Hotel provides all of the exclusivity and privacy you might expect from this prestigious Estate – making it the perfect retreat when travelling on vacation or business. The elegant 41-bedroom hotel wraps around a heritage building, creating an inviting courtyard. This design complements its historic character, while modern amenities ensure the utmost comfort. Aside from the location and spectacular views, hotel guests also have access to facilities including the Estate's Soulstice Day Spa, Be Hair Salon, five upmarket restaurants and the Conference Centre.

**Day 10: End of Itinerary**

## Urgent Contact Numbers

### Service Provider Directory

Service Provider	Ref. Number	Telephone	Address
Am Weinberg Estate's Boutique Hotel		+264 61 209 0900	13 Jan Jonker Street Windhoek Namibia
Klein-Aus Vista Desert Horse Inn Gondwana Collection Namibia		+264 63 25 8021	Gondwana Sperrgebiet Rand Park, 2km west of Aus, on the B4 main road to Luderitz. Namibia.
Namib Desert Lodge Gondwana Collection Namibia		+264 61 42 7200	Namib Desert Lodge Solitaire Region
Namib Dune Star Camp Gondwana Collection Namibia		+264 61 42 7200	Namib Desert Lodge Solitaire Region
Olive Grove Guesthouse		+264 61 30 2641	20 Promenaden Road Windhoek Namibia
The Delight Swakopmund Gondwana Collection Namibia		+264 61 42 7200	Theo Ben Gurirab Avenue Swakopmund 13001
Zebra Kalahari Lodge & Spa		+264 61 375 300	C21 D1268 Kalkrand No postal code for Location ID: 2081

## Travel Information

### Safari Do's and Dont's:

Jenman Safaris has extensive knowledge and experience in most African Countries. Throughout the many years we have learnt about a few "Do's and Dont's" while travelling in and around Africa. We have therefore developed this list for you to read at your leisure. All tips are not always relevant to all the areas that you travel to – depending on your tour.

Due to a lack of transparent and credible regulation relating to ethically acceptable practices where captive wildlife is concerned, Jenman African Safaris has taken the decision not to support any activities that include physical contact with captive wildlife. We urge you to consider the ethical implications of taking part in any such activity that may be offered at your lodge.

#### Arriving for Safari

Get some rest on the first day of your arrival – you may need some time to adjust to a different time zone. Rather arrive a day early to rest and start off your tour refreshed and ready for adventure!

#### Currency

When you need to exchange your currency, avoid any exchanges on the street or in other areas that may seem suspect. Always note that even when people approach you with an, e.g., 50% premium exchange rate offer, this exchange is considered part of the black market and is illegal! Hotels, Camps and Lodges can change money, but sometimes the rate is slightly lower. We recommend that you visit an accredited Bureau de Change.

#### Credit Cards

Credit cards such as Visa and MasterCard are widely accepted in most areas as well as at bigger hotels and lodges.

#### Hospitals and Pharmacies

The larger towns in Southern Africa have pharmacies and hospitals, but you should always make sure you have enough of your medicine in case the pharmacies/hospitals don't stock them.

#### Telephone

In most areas you can call internationally – however please note that some of the smaller areas may not have these facilities and international phone calls are costly. Also, built up areas and towns do have cell-phone reception!

#### Passports, Documents and Valuables

Please make sure that you keep your passport, documents and any other valuables with you at all times! We recommend that a copy of these documents should be made and kept in another safe place in case something happens to the originals. Never leave valuables alone and remember you are on safari, so expensive and valuable jewellery is not necessary.

#### Safety

Every area (any where in the world) can be unsafe at times. Please take common precautions at all times and never walk alone, especially at night or in run-down areas!

## Packing

Remember to always check the amount of luggage you are allowed to take on the plane as well as on the Safari Vehicle – they may differ. We recommend that a soft bag is used instead of a hard suitcase as it's preferable on safari. Most air flights allow for 20kgs and our scheduled safaris are limited to 15kgs per person. Don't forget to put luggage tags on your suitcases (for the airplane and the safari).

## Luggage and Medication

Please be advised that you should put any medication that you need (e.g.: diabetes medication) into your hand luggage, even with the strict regulations, airlines will allow that as long as you have a letter from your doctor.

## What to wear:

You are on safari and out in the bush so make sure that you are comfortably dressed with comfortable shoes. Always have a mix of clothing including; summer clothes, light raincoat, warm top and a hat.

## Punctuality

Please be on time when you meet your vehicles for the game drives. If you run late you may delay the rest of the trip or miss something wonderful!

## Climate

Always remember that the African Sun may look gentle but it is strong and can be harsh. Too much sun can lead to headaches, dehydration, nausea and dizziness. Rather look after yourself by using sun screen and a hat versus trying to get a nice African Tan.

## Drinking Water

In built-up areas the water is safe to drink (mostly in South Africa) however, some areas it is not safe to drink the tap water at all! So we rather recommend that you drink bottled water at all times to prevent any illness. You may use the tap water to rinse your mouth when brushing your teeth! Ice is generally fine to consume, but sometimes it is better to be cautious. We advise you to rather drink bottled water at all times in Africa!

## Food and drink

Africa is famous for its fruit and fresh vegetables – which can be enjoyed all around Africa. Fruit and Vegetables should be peeled before eating. Drinks (including spirits) and cigarettes can be bought in most areas but are normally quite expensive. On our Safaris we do provide most/all meals which are prepared by our guide or at a lodge.

## Anti-malaria medication

A lot of areas in Africa are affected by Malaria – we strongly recommend that you take your anti-malaria medication. Take your medication exactly as its prescribed and directed, don't skip any



medication! At the end of your safari, if at any time you develop influenza symptoms please consult your doctor immediately.

### Power and Electricity

Most places (hotels, lodges) have electricity. But we always recommend that you should take a flash light with you on safari. Always remember if you plug something in (e.g.: One of your appliances) there may be a different voltage! The usual voltage is 220-240 AC. If your appliance does not match this voltage you need to bring a converter with as some lodges may not have a converter for you to use...

### Photos

There will be many amazing photo's that you will want to capture along the way on your safari. But, you need to make sure you don't take any photos of any people without their permission. Also, never take pictures of anyone/anything in the military, police force, armed forces, government, presidents or airports.

### Animals

The animals in the bush and the ones that you may see on safari are wild and should not be approached! Animals may roam freely around so be observant and cautious when walking from place to place.

### Tipping

Tipping is not included in meals unless there is a service charge included in the bill – then you don't need to tip. Normal tipping is 10% of the bill for drinks and food. Tipping for guides and drivers are always appreciated and range from US\$5 and US\$10 per day.

### Driver-Guide/Safari Guide

Your driver and guide is complete with experience, information and knowledge of all the areas that you will travel to. Be sure to ask them lots of questions and feel free to chat to them about anything.

We hope that our list of 'Do's and Don'ts' have been useful and helpful. Please don't hesitate to contact us if you have any more questions that we haven't covered in the above list...

[info@jenmansafaris.com](mailto:info@jenmansafaris.com)